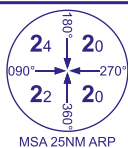
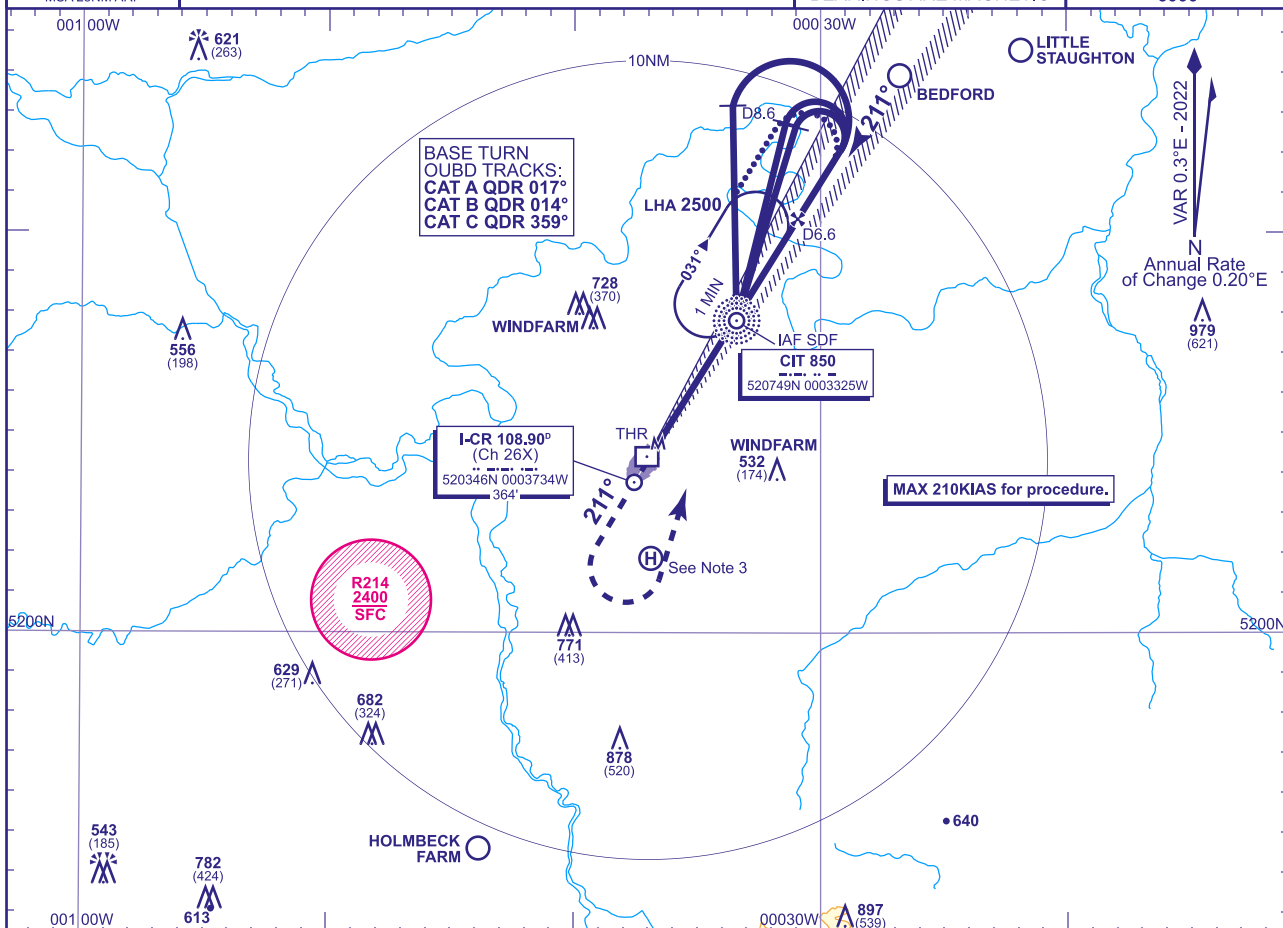


CRANFIELD
LOC/DME/NDB(L)
RWY 21
(ACFT CAT A,B,C)



APP 122.855	CRANFIELD APPROACH	AD ELEVATION 360
TWR 134.930, 122.855	CRANFIELD TOWER	THR ELEVATION 358
		OBSTACLE ELEVATION 979 AMSL (621) (ABOVE THR)
		BEARINGS ARE MAGNETIC

TRANSITION ALTITUDE
6000



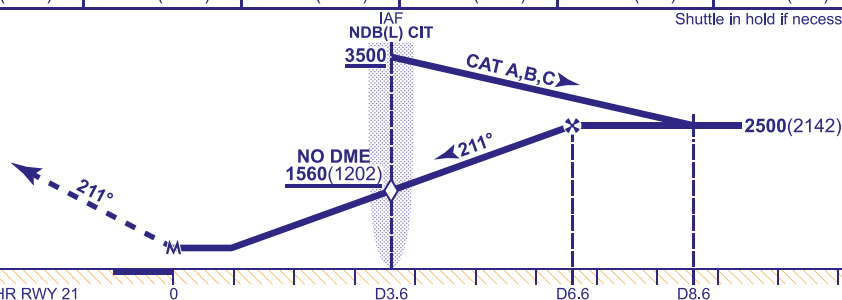
RECOMMENDED PROFILE Gradient 5.2%, 320FT/NM

DME I-CR	6	5	4	3.6 (SDF)	3	2	1
ALT(HGT)	2310(1952)	1990(1632)	1680(1322)	1560(1202)	1360(1002)	1040(682)	730(372)

Shuttle in hold if necessary.

MAPt THR RWY 21

Climb straight ahead to **1500**, then climbing left turn to **2500** to join the **NDB(L) CIT** hold.



DME I-CR zero ranged to THR RWY 21

Aircraft Category		A	B	C		Rate of descent	G/S KT	160	140	120	100	80
OCA (OCH)	Procedure	670(312)	670(312)	670(312)		FT/MIN	860	750	640	540	430	
VM(C)OCA (OCH AAL)	Total Area	800(440)	970(610)	1150(790)		NDB(L) CIT to MAPt	MIN:SEC	1:25	1:35	1:50	2:12	2:46

ALTERNATIVE PROCEDURE EXTENDED HOLDING PATTERN

Extend the outbound leg of the NDB(L) CIT holding pattern to D8.6; descending to **2500**(2142), then turn right to intercept the LOC. Continue as for main Procedure.

AIRCRAFT UNABLE TO RECEIVE DME

FLY OUTBOUND PRIOR TO BASETURNS OR EXTEND OUTBOUND LEG OF THE NDB(L) CIT HOLD FOR 2.5MIN (CAT A); 2MIN (CAT B); 1.5MIN (CAT C) DESCENDING TO 2500(2142). THEN TURN RIGHT TO INTERCEPT THE LOC. WHEN ESTABLISHED INBOUND DESCEND NOT BELOW 1560(1202) AT THE SDF (NDB(L) CIT), THEN TO MDH.

NOTES 1 ATC will normally require holding **not below 3500**. Lowest altitude to commence procedure after missed approach is **2500**.

2 CIT NDB(L) hold restrictions: MAX holding level **5000**, MAX 180KIAS.

3 Occasional helicopter activity at Helimech Helipad (520152N 0003653W).

CHANGE (7/25): EGD206 REMOVED.

AERO INFO DATE 17 APR 25

AD 2-EGTC-8-3